



Wall bracket with crossbar MSH



Load capacity
up to 200 kg

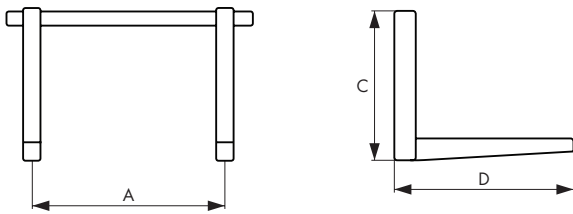


Ready for
installation

Description

Wall bracket for mounting outdoor units. Made of galvanized steel metal and painted with RAL 9016, highly resistant to weathering. Adjustable mounting distance of the outdoor unit. The mounting crossbar is equipped with level. Silence is obtained by dedicated vibration-damping devices on the shelves and adjustable articulated feet on the back of the arm that eliminate all vibrations transmitted by the unit.

Technical drawing



Technical specifications

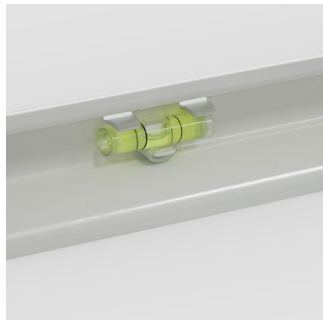
- Crossbar with adjustable mounting
- Foldable arms, slide-in mounting crossbar, painted (RAL 9016)
- Adjustable vibration dampers
- Wall bracket with spirit-level supplied
- Equipped with wall fixing kit, vibration dampers
- Load capacity: MSH 450 - 180 kg
- MSH 550 - 200 kg
- Quantity per box: 6 sets

Dimensions [mm]:

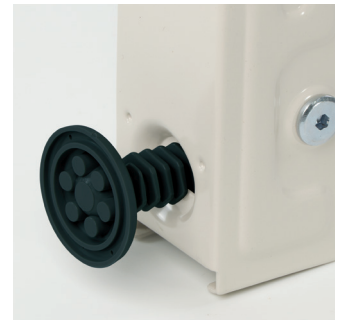
Model	A	C	D	Weight	Load capacity
MSH 450	780	375	450	3,33 kg	180 kg
MSH 550	780	375	550	3,90 kg	200 kg



Load capacity up to 200 kg



Leveling system for a quick installation



Reduced point load on the wall,
height-adjustable rear swivel feet