



## Duct fans ICM



High pressure



Two-speed motor



IP 45 protection class



Easy installation

### Design

Duct fan, diagonal. Its unique design allows it to achieve high operating parameters with relatively low noise and low energy consumption. The fan cover is made of polypropylene, while the rotor is made of ABS plastic. Special connectors make it easy to install, remove and maintain the appliance. The device can be installed both horizontally and vertically.

### Usage

The ICM fan is designed to transport clean air. It is ideal for the installation of air-supply and exhaust in residential buildings, public utility buildings, offices, shops. The device can also be used for the installation of fume hoods from kitchen hoods that require the use of grease filters.

### Electric motor

**Two-speed motor**, powered by single-phase current 230V, 50Hz. Suitable for voltage regulation. Protection class IP 44, insulation class B. The motor is equipped with durable ball bearings and thermal protection of the winding against overload.

### Operating temperature

The fan is designed to transmit air with a temperature not exceeding 60°C.



Dynamically balanced diagonal rotor



Sealed connection box located on the cover



Special profiled guides located behind the rotor ensure higher efficiency



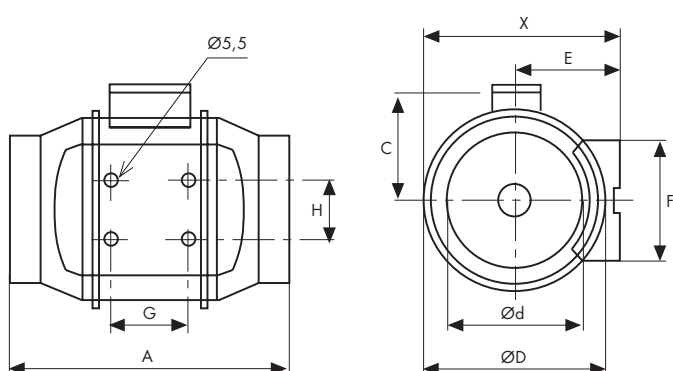
Stable mounting base for the fan

### Technical specifications

Model	Speed	Air flow [m <sup>3</sup> /h]	Impeller speed [rpm]	Power [W]	Current [A]	Voltage [V]	Frequency [Hz]	Sound pressure level [dB(A)]	Weight [kg]	Switch HRS	Controller HRX	Controller HRB
ICM-100/200M	HS	198	2200	26	0,12	230	50	31	2,0	Yes	1,0	1,5
	LS	165	1850	23	0,11			26				
ICM-125/290M	HS	284	2250	33	0,14	230	50	31	1,8	Yes	1,0	1,5
	LS	248	1850	28	0,13			26				
ICM-150-160/530M	HS	530	2550	54	0,24	230	50	33	2,7	Yes	1,0	1,5
	LS	410	1850	48	0,21			29				
ICM-200/840M	HS	840	2450	128	0,57	230	50	63	4,9	Yes	1,0	1,5
	LS	690	1950	123	0,52			55				
ICM-250/1410M	HS	1405	2450	225	1,20	230	50	66	7,5	Yes	2,5	1,5
	LS	1064	1950	165	0,75			58				
ICM-315/2210M	HS	2206	2350	390	1,90	230	50	69	11,3	Yes	2,5	3,0
	LS	1750	1650	275	1,40			61				

Sound pressure level measured at 3m.

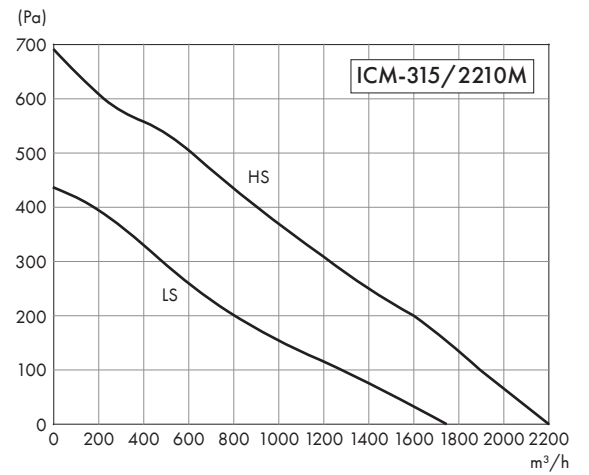
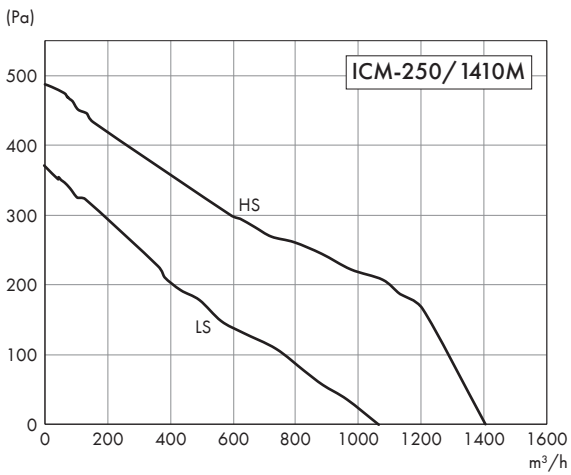
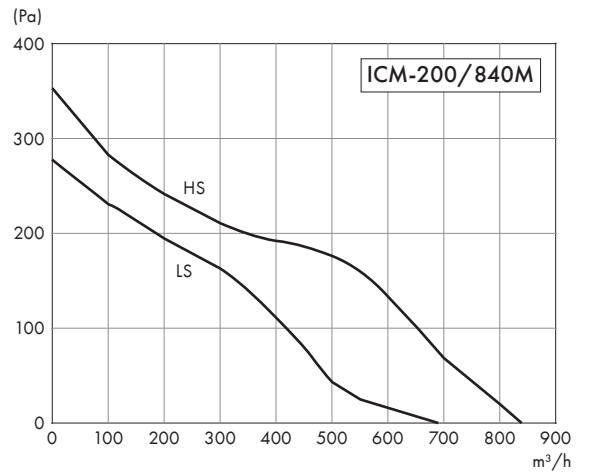
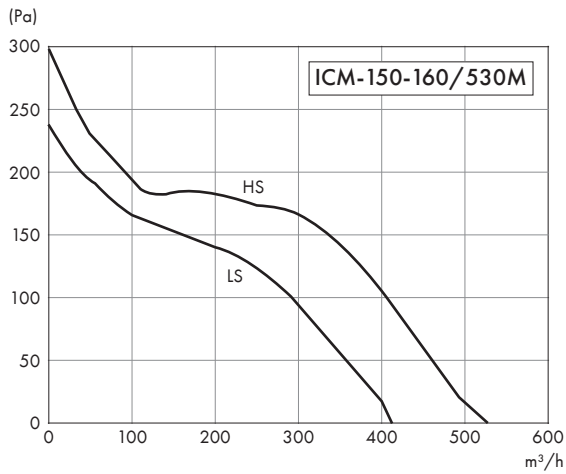
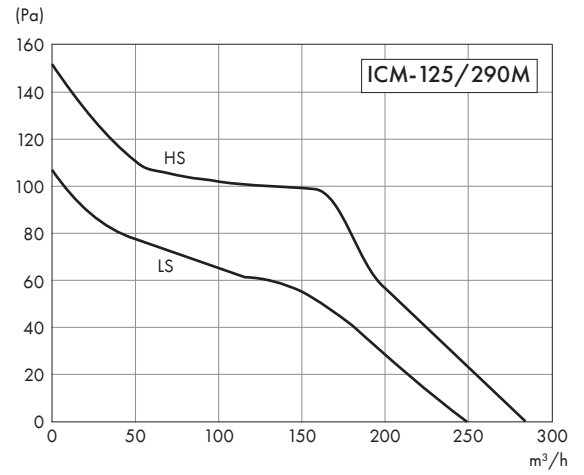
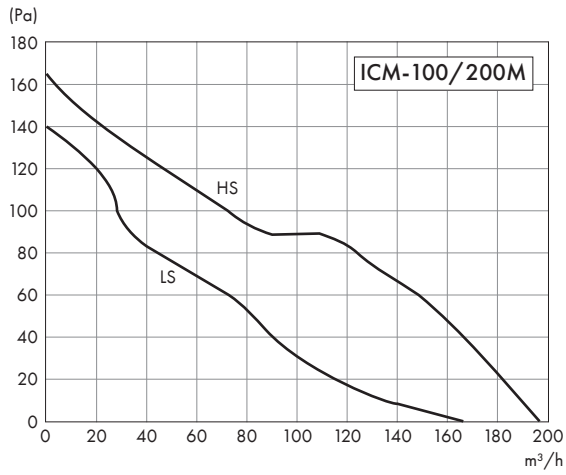
### Technical drawing



### Dimensions [mm]

Model	X	A	ØD	C	Ød	E	F	G	H
ICM-100/200M	188	303	176	115	97	100	90	80	60
ICM-125/290M	188	258	176	115	123	100	90	80	60
ICM-150-160/530M	212	320	200	127	147/158	112	130	80	60
ICM-200/840M	232	302	217	141	197	124	140	100	94
ICM-250/1410M	286	383	258	173	247	151	195	150	173
ICM-315/2210M	357	446	324	216	312	187	220	181	216

## Characteristics



## Accessories



### HRS

Single-phase motor gear switch  
page 175



### HRB

Transformer speed controller  
page 176



### PSH

Pressure switch  
page 173



### PCC

Fastening clamp  
page 81



### HRX

Electronic speed controller  
page 174



### FKOV

Filter G3 for round ducts  
page 83



### AKUFLEX

Flexible acoustic silencer  
page 71



### RSKV

Backdraft damper  
page 41



### WSH

Service switch  
page 177