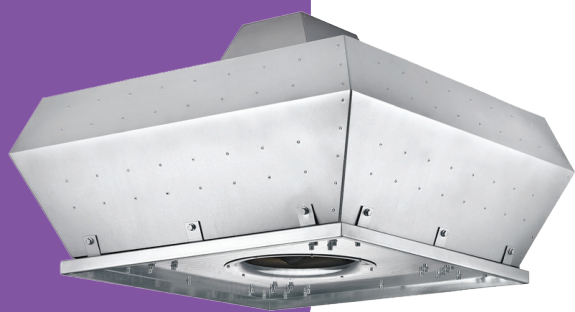


# Roof fans RKV



120°C



Vertical position



IP 55 protection class



Exhaust fan

## Design

Roof fan, radial with vertical air exhaust. Cover made of galvanised sheet. Rotor with backward curved impeller, made of galvanised sheet, dynamically balanced. The high rotor design significantly reduces noise emissions.

## Usage

RKV fans will work well in industrial installations removing polluted air with elevated temperatures, such as factories, steelworks, workshops, as well as restaurants, or housing facilities. The fan can also be used in kitchen hoods.

## Electric motor

Asynchronous single-phase 230V, 50Hz or three-phase 400V, 50Hz, adapted for frequency converter regulation. Protection class IP 55, insulation class F.

## Operating temperature

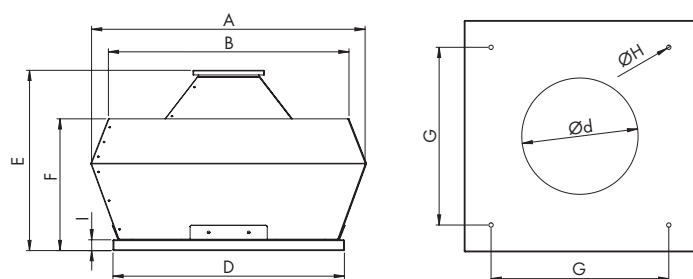
The fan is designed to transmit air with a temperature not exceeding 120°C.

## Technical specifications

Model	Air flow [m <sup>3</sup> /h]	Impeller speed [rpm]	Power [kW]	Current [A]	Voltage [V]	Frequency [Hz]	Capacitor [µF]	Sound pressure level [dB(A)]	Weight [kg]	Frequency converter	Inlet flange
RKV-315/2000 M	1900	1380	0,25	2,1	230	50	10	48-40	22	-	ILB 315
RKV-355/3000 M	2850	1380	0,25	2,1	230	50	10	50-42	27	-	ILB 355
RKV-400/4000 M	4000	1390	0,37	3,4	230	50	15	51-43	33	-	ILB 400
RKV-315/2000 T	1900	1380	0,25	0,87	400	50	-	48-40	22	Yes	ILB 315
RKV-355/3000 T	2850	1380	0,25	0,87	400	50	-	50-42	27	Yes	ILB 355
RKV-400/4000 T	4000	1390	0,37	1,2	400	50	-	51-43	33	Yes	ILB 400
RKV-450/5500 T	5300	1365	0,55	1,6	400	50	-	54-46	38	Yes	
RKV-500/7500 T	8000	1410	1,1	2,6	400	50	-	56-48	49	Yes	
RKV-560/10000 T	10500	1420	2,2	4,9	400	50	-	65-57	58	Yes	

Sound pressure level measured outdoor at 4 and 10 m.

## Technical drawing



## Dimensions [mm]

Model	A	B	Ød	D	E	F	G	H	I
RKV-315/2000	845	740	185	700	550	395	576	14	35
RKV-355/3000	845	740	235	700	550	395	576	14	35
RKV-400/4000	895	780	270	750	585	430	576	14	35
RKV-450/5500	960	855	282	800	595	440	625	14	35
RKV-500/7500	1030	915	320	850	695	490	675	14	35
RKV-560/10000	1195	960	360	950	820	610	740	14	35

## Accessories



**HRX**  
Electronic speed controller  
page 174



**FKOV**  
Filter G3 for round ducts  
page 83



**PCC**  
Fastening clamp  
page 81



**RSKV**  
Backdraft damper  
page 41



**HRB**  
Transformer speed controller  
page 176

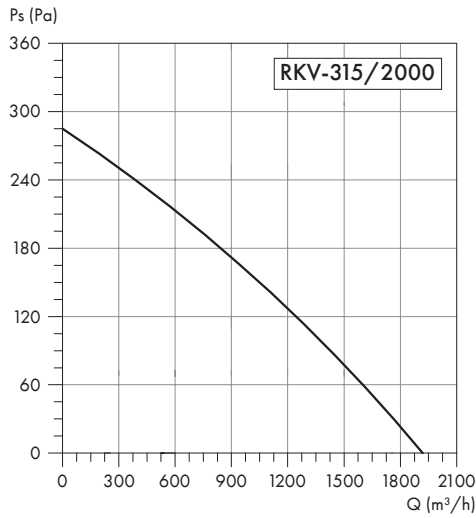


**PSH**  
Pressure switch  
page 173

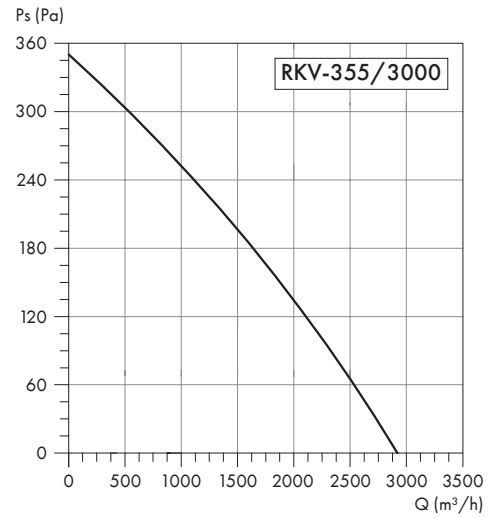


**WSH**  
Service switch  
page 177

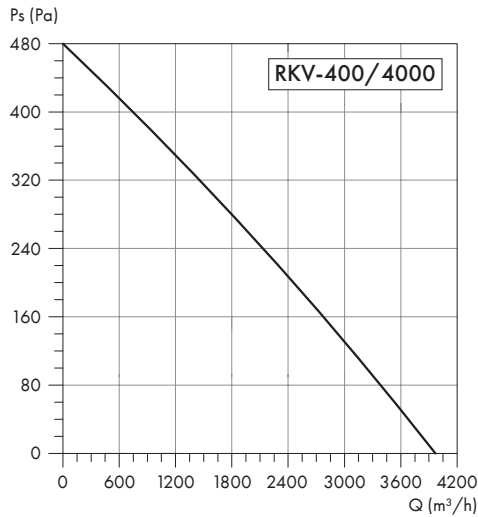
## Characteristics



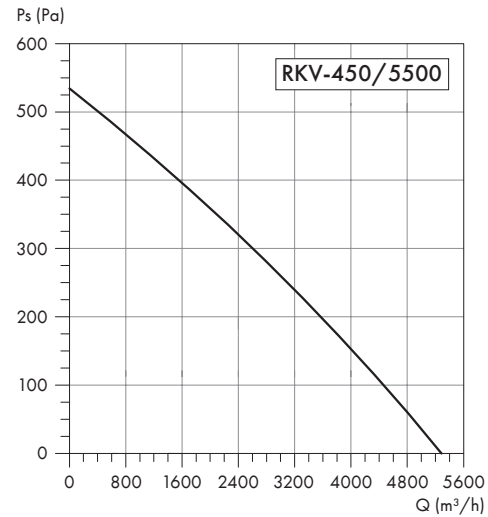
Frequency	Total	63	125	250	500	1000	2000	4000	8000	Hz
$L_{wa}$ Inlet	69	40	58	62	64	63	60	55	48	dB(A)
$L_{wa}$ Emited	71	42	60	64	66	65	62	57	50	dB(A)



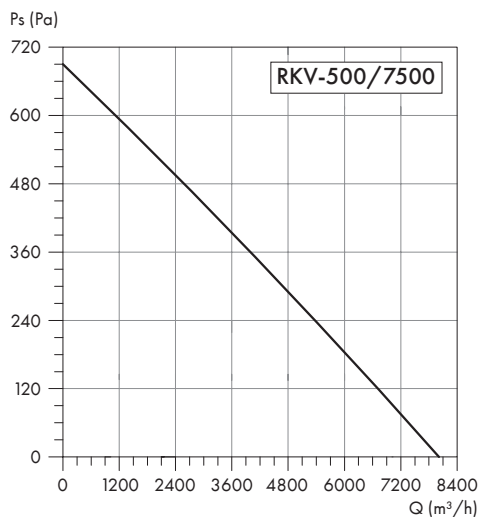
Frequency	Total	63	125	250	500	1000	2000	4000	8000	Hz
$L_{wa}$ Inlet	71	42	60	64	66	65	62	57	50	dB(A)
$L_{wa}$ Emited	73	44	62	66	68	67	64	59	52	dB(A)



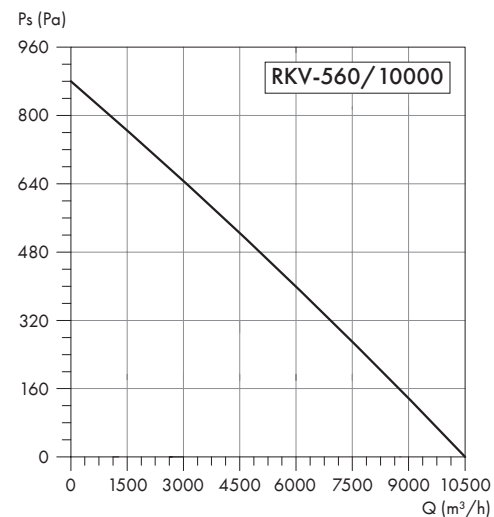
Frequency	Total	63	125	250	500	1000	2000	4000	8000	Hz
$L_{wa}$ Inlet	72	59	61	65	67	66	63	58	51	dB(A)
$L_{wa}$ Emited	74	61	63	67	69	68	65	60	53	dB(A)



Frequency	Total	63	125	250	500	1000	2000	4000	8000	Hz
$L_{wa}$ Inlet	75	62	64	68	70	69	66	61	54	dB(A)
$L_{wa}$ Emited	77	64	66	70	72	71	68	63	56	dB(A)



Frequency	Total	63	125	250	500	1000	2000	4000	8000	Hz
$L_{wa}$ Inlet	72	59	61	65	67	66	63	58	51	dB(A)
$L_{wa}$ Emited	79	66	68	73	74	73	70	65	58	dB(A)



Frequency	Total	63	125	250	500	1000	2000	4000	8000	Hz
$L_{wa}$ Inlet	86	73	75	79	81	80	77	72	65	dB(A)
$L_{wa}$ Emited	88	75	77	81	83	82	79	74	67	dB(A)