

Pressed collar saddle, without gasket

PS



Rounded, reinforced
"SAFE" edges

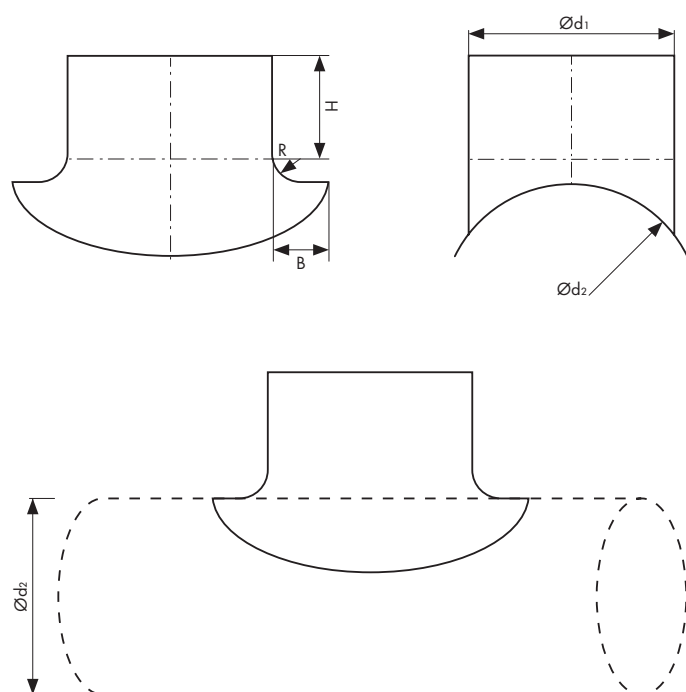


Top quality
galvanised steel
275 g/m²

Description

Collar saddle without gasket "PS" **SAFE**, made from top quality galvanised steel (275 g/m²). Fully automated stamping process from one metal sheet. With every edge "SAFE" type - reinforced with curved rims, provide additional fitting rigidity and safe mounting.

Technical drawing



Dimensions [mm]

| Ødz nom/ Ød1 nom | H | B | R | kg | pcs/box | box type |
|------------------|----|----|----|------|---------|----------|
| 80 / 80 | 40 | 30 | 10 | 0,10 | 70 | P12 |
| 100 / 80 | 40 | 30 | 10 | 0,10 | 60 | P12 |
| 100 / 100 | 40 | 32 | 12 | 0,14 | 85 | P6 |
| 125 / 80 | 40 | 30 | 10 | 0,10 | 60 | P12 |
| 125 / 100 | 40 | 32 | 12 | 0,12 | 90 | P6 |
| 125 / 125 | 40 | 32 | 12 | 0,21 | 70 | P4 |
| 160 / 80 | 40 | 30 | 10 | 0,09 | 75 | P12 |
| 160 / 100 | 40 | 32 | 12 | 0,12 | 105 | P6 |
| 160 / 125 | 40 | 32 | 12 | 0,19 | 85 | P4 |
| 160 / 160 | 40 | 36 | 16 | 0,34 | 70 | P2 |
| 200 / 80 | 40 | 30 | 10 | 0,09 | 70 | P12 |
| 200 / 100 | 40 | 32 | 12 | 0,12 | 100 | P6 |
| 200 / 125 | 40 | 32 | 12 | 0,17 | 80 | P4 |
| 200 / 160 | 40 | 36 | 16 | 0,29 | 54 | P4 |
| 200 / 200 | 40 | 50 | 20 | 0,46 | 63 | P2 |
| 250 / 100 | 40 | 32 | 12 | 0,12 | 100 | P6 |
| 250 / 125 | 40 | 32 | 12 | 0,17 | 105 | P4 |
| 250 / 160 | 40 | 36 | 16 | 0,29 | 68 | P4 |
| 250 / 200 | 40 | 50 | 20 | 0,41 | 32 | P4 |
| 250 / 250 | 40 | 50 | 20 | 0,63 | 38 | P2 |
| 315 / 100 | 40 | 32 | 12 | 0,12 | 115 | P6 |
| 315 / 125 | 40 | 32 | 12 | 0,17 | 100 | P4 |
| 315 / 160 | 40 | 36 | 16 | 0,27 | 66 | P4 |
| 315 / 200 | 40 | 50 | 20 | 0,41 | 32 | P4 |
| 315 / 250 | 40 | 50 | 20 | 0,50 | 44 | P2 |
| 315 / 315 | 40 | 55 | 25 | 0,85 | 60 | P1 |
| 400 / 100 | 40 | 32 | 12 | 0,12 | 100 | P6 |
| 400 / 160 | 40 | 36 | 16 | 0,25 | 76 | P4 |
| 400 / 200 | 40 | 50 | 20 | 0,37 | 38 | P4 |
| 400 / 250 | 40 | 50 | 20 | 0,49 | 44 | P2 |
| 400 / 315 | 40 | 55 | 25 | 0,68 | 66 | P1 |
| 450 / 200 | 40 | 50 | 20 | 0,37 | 38 | P4 |
| 450 / 250 | 40 | 50 | 20 | 0,37 | 22 | P4 |
| 450 / 315 | 35 | 7 | - | - | 60 | P1 |
| 500 / 315 | 35 | 7 | - | - | - | - |



Packaging method on page 38