

## Threaded rods PGI



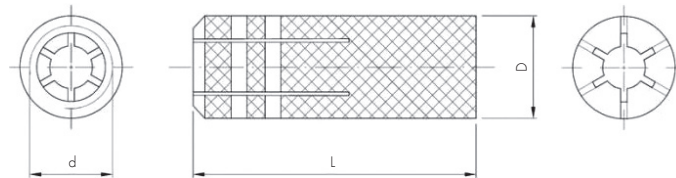
The rods are made of galvanized steel, length 2 m.

**Dimensions: M8, M10**

## Drop-in anchor TKV



Steel or brass drop-in anchors enable the assembly, among others, of threaded rods in ceilings and walls.



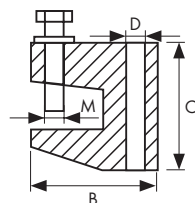
### Dimensions [mm]

Model	d	L	D	Box [pcs]
M8	M8	28	10	100
M10	M10	33	12	50

## Beam clamp for threaded rod HBV



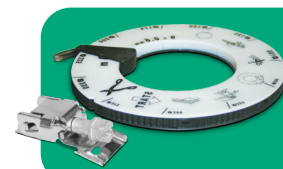
The brackets are made of galvanized steel.



### Dimensions [mm]

Model	B	C	D	M	Max load [kg]
M8	38	35	M8	10	112
M10	45	42	M10	10	245

## Duct band clamp and clamps CFB, CFC



Clips for connecting flexible cables to fittings, adapters, etc. "CFC" clamps are required for the straps.

### The CFB band

Length - 30m  
Width - 9mm  
Material - stainless steel

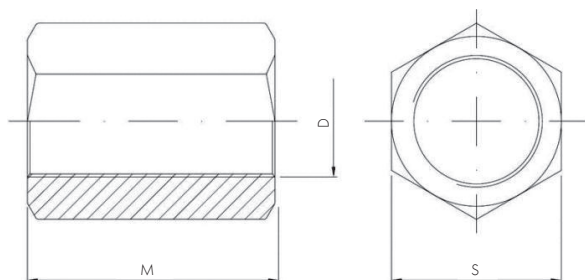
### CFC clamps

Quantity of clamps in the package: 50 pieces.

## Coupling nut NBV



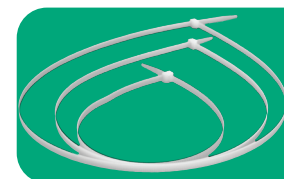
Coupling nut, galvanized steel, allows connecting threaded rods.



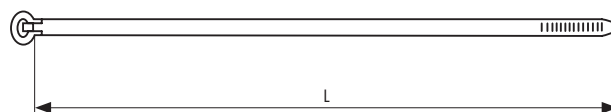
### Dimensions [mm]

Model	D	M	S	Box [pcs]
M8	M8	24	13	100
M10	M10	30	17	100

## Nylon band CFN



The "CFN" nylon band clamps are a very good alternative to metal bands. Their design ensures quick and easy installation. "CFN" bands can be used in temperatures from -55°C to +100°C. Box of 100.



### Dimensions [mm]

Model	L	Max diameter	Model	L	Max diameter
CFN 200	200	-	CFN 920	920	290
CFN 550	550	175	CFN 1188	1188	378
CFN 800	800	255	-	-	-